

# Rainbowl Flower

150 Litres

Art. No. 9000880K  
Art. No. 9000884K  
Art. No. 9000886K  
Art. No. 9000890K

# Rainbowl Flower

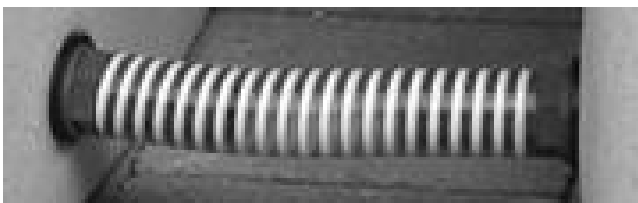
150 Litres

Art. No. 9000880K  
Art. No. 9000884K  
Art. No. 9000886K  
Art. No. 9000890K



## 5. Tank-to-tank Connection

It is possible to connect two tanks together. We recommend using the 3P Tank to Tank Connection Kit 250 mm (Art. No. 900326).



## Instructions

To fill the Rainbowl Flower, we recommend using the 3P Filter Collector with rubber grommet for the 32mm connection hose.

Where the water butt cannot be located within 30 cm of the downpipe, longer Long Link Kits are available from your dealer.

The Rainbowl Flower is delivered with a full kit including a chrome or brass tap, hole-saw, wall bracket, and screws. If in any doubt during installation, please consult a professional tradesman, or the supplier of your filter or diverter.



## 1. Setting Up

Site the Flower on a firm, level surface, adjacent to the downpipe.

To allow for deflection, fill the tank with water before attaching the wall bracket.

Refer to your Filter Collector or diverter supplier's instructions. This is a sealed tank, you cannot use a back nut to make a connection.

## 2. Fitting a 3P Filter Collector with Link Kit, or Other Diverters & Connectors

For the correct hole size, refer to your diverter's instructions. You may be able to use the 3P hole saw. Check before using. The connector parts supplied with the rainbowl Flower are intended for use with a 3P Filter Collector.

## Marking Out

Measure up 85cm from the base of the butt. This position is ideal for 45mm hole for a 32mm hose connection.

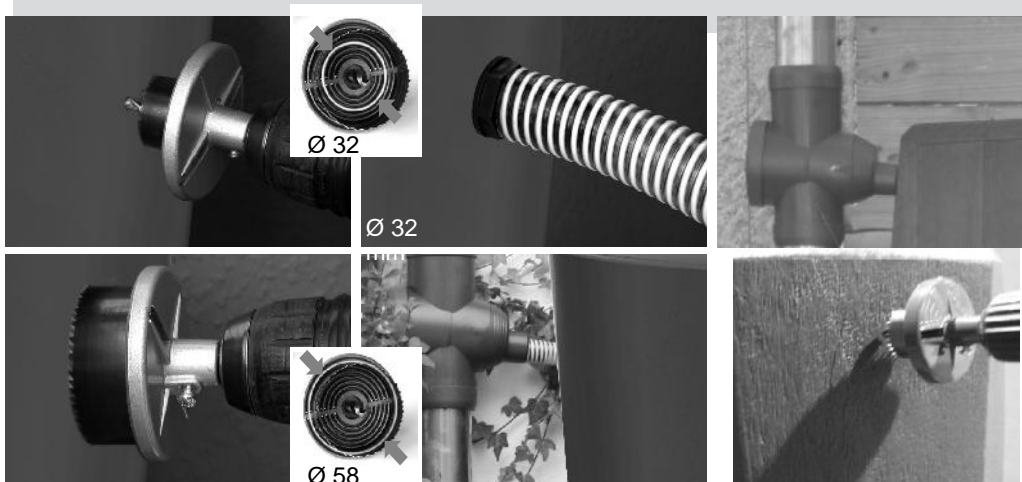
## Hole Cutter Selection

To fill the water butt with the 3P Filter Collector, select the 45 mm hole saw from the set provided. Push fit the 32mm grommet into that hole and push the 32mm hose into the grommet to make a water tight seal.

## Drilling

Offer the drill to the marked point and proceed to drill the hole .. If you are not fitting the 3P Filter Collector or any other diverter, check first that you are drilling the correct hole size for the set you are using.

**IF IN DOUBT CONSULT YOUR SUPPLIER OR A PROFESSIONAL.**



## 3. Connecting the Tap

Screw the 3/4" metal tap provided into the 3/4" BSP connection thread. If necessary, use PTFE tape when installing the tap to enhance the watertight seal and to ensure the tap sits in the correct position.

## 4. Winter Care Precautions

To minimise the risk of any damage being caused, the Flower must be drained completely and disconnected from the rainwater inlet during freezing weather conditions.

